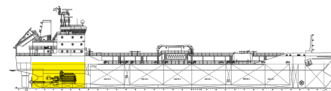


# LECTRO CLEAN SLOW



Page  
1 of 2

## GENERAL PURPOSE DEGREASING SOLVENT AND ELECTRICAL PARTS CLEANER SLOW DRYING

### PHYSICAL DATA

Appearance: Colourless liquid  
Average specific gravity:  $0.90 \pm 0.02$  20°C.  
Flash Point: More than 61°C.  
Corrosive action: Metal and varnish

### DESCRIPTION

Liquid degreasing solvent containing chlorinated and aliphatic petroleum solvents.

- Penetrates and dissolves oil and grease
- Leaves clean and dry surfaces
- Single process cleaning
- No rinsing required

### APPLICATION

- Cleaning and degreasing of electrical equipment such as motors, generators, switchgear, contactors, coils, winches, etc
- General degreasing and cleaning of machine parts and equipments without rinsing.
- Can be used on all metals, metal alloys and insulating varnishes, (except for certain plastics) where no ignition source is present.

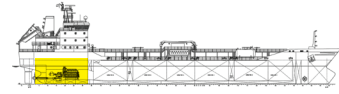
### ADVANTAGES

- Rapid penetration and action.
- High solvent power.
- Dries completely leaving clean, dry surfaces.
- Can be applied by non-atomising spray, avoiding the need to dismantle parts.
- Can be reused.

### DIRECTION OF USE

- Use LECTRO CLEAN SLOW neat. Do not dilute or use in any solution or emulsion.
- Do not use in the vicinity of any ignition source.
- Allow LECTRO CLEAN SLOW to completely evaporate leaving surface dry.

# LECTRO CLEAN SLOW

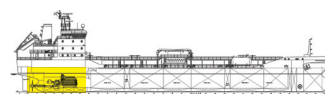


Page  
2 of 2

**IMPORTANT:** WHILE THE DESCRIPTIONS, DESIGNS, DATA AND INFORMATION CONTAINED HEREIN ARE PRESENTED IN GOOD FAITH AND BELIEVED TO BE ACCURATE, THIS INFORMATION IS PROVIDED FOR YOUR GUIDANCE ONLY. BECAUSE MANY FACTORS MAY AFFECT PROCESSING OR APPLICATION/USE, WE RECOMMEND THAT YOU DO A TEST TO DETERMINE THE SUITABILITY OF A PRODUCT FOR YOUR PARTICULAR PURPOSE PRIOR TO USE. NO WARRANTIES OF ANY KIND, EITHER EXPRESSED OR IMPLIED, INCLUDING WARRANTIES OF MERCHANTABILITY OR FITNESS FOR A PARTICULAR PURPOSE, ARE MADE REGARDING PRODUCTS DESCRIBED OR DESIGNS, DATA OR INFORMATION SET FORTH, OR THAT THE PRODUCTS, DESIGNS, DATA OR INFORMATION MAY BE USED WITHOUT INFRINGING THE INTELLECTUAL PROPERTY RIGHTS OF OTHERS. IN NO CASE SHALL THE DESCRIPTIONS, INFORMATION, DATA OR DESIGNS PROVIDED BE CONSIDERED A PART OF OUR TERMS AND CONDITIONS OF SALE. FURTHER, YOU EXPRESSLY UNDERSTAND AND AGREE THAT THE DESCRIPTIONS, DESIGNS, DATA AND INFORMATION FURNISHED BY URRUTY GG NIEGO SRL HEREUNDER ARE GIVEN GRATIS, AND URRUTY GG NIEGO SRL ASSUMES NO OBLIGATION OR LIABILITY FOR THE DESCRIPTION, DESIGNS, DATA AND INFORMATION GIVEN OR RESULTS OBTAINED, ALL SUCH BEING GIVEN AND ACCEPTED AT YOUR RISK.

this space intentionally left blank

# LECTRO CLEAN SLOW



Rev.  
007

## Safety Data Sheet

### 1. Identification of the substance / preparation and the Company

#### 1.1 Identification of the substance or preparation

Product name    LECTROCLEAN SLOW

#### 1.2 Use of the substance / preparation

Intended use

General purpose degreasing solvent and  
electrical parts cleaner slow drying

#### 1.3 Company identification

Name

Urruty gg Niego S.r.l.

Full address

Via al Santuario di N.S. Guardia 58 a

District and Country

16162 Genova Bolzaneto (GE)

Italia

Tel. + 39 010 711395

Fax + 39 010 713120

e-mail address of the competent  
person responsible for the  
Safety Data Sheet

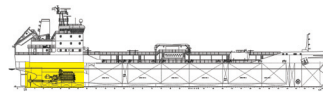
info@uniservicemarine.com

#### 1.4 Emergency telephone

For urgent inquiries refer to

First Aid Information: Centro Antiveleni  
Milano - Niguarda  
Phone: 02 - 66101029 (specialized in  
chemical products poisoning).

# LECTRO CLEAN SLOW



Rev.  
007

## 2. Hazards Identification

### 2.1 Substance/Preparation Classification

This product is dangerous under 67/548/EEC and 1999/45/EC directives and subsequent amendments. Therefore, this product requires a safety data sheet according to the Regulation (EC) 1907/2006 and subsequent amendments. Further information on health and/or environmental hazards can be found in sections 11 and 12 of this sheet.

Danger Symbols: Xn  
R phrases: 40-52/53-65

### 2.2 Danger Identification

LIMITED EVIDENCE OF A CARCINOGENIC EFFECT.  
HARMFUL TO AQUATIC ORGANISMS, MAY CAUSE LONG-TERM ADVERSE EFFECTS IN THE AQUATIC ENVIRONMENT.  
HARMFUL: MAY CAUSE LUNG DAMAGE IF SWALLOWED.

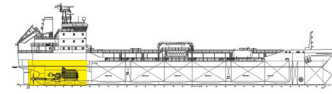
## 3. Composition / Information on ingredients

Contains:

Name	Concentration % (C)	Classification
TETRACHLOROETHYLENE	22,5 <= C < 24	Xn R40 Carc. Cat. 3
CAS No 127-18-4		
CE No 204-825-9		N R51/53
Index No 602-028-00-4		
NAPHTA (PETROL.) HYDRODESULFURIZED HEAVY	74 <= C < 78	Xn R65 Note H P 4
CAS No 64742-82-1		
CE No 265-185-4		
Index No 649-330-00-2		

The complete text of -R- phrases is specified in section 16.

# LECTRO CLEAN SLOW



Rev.  
007

## 4. First aid measures

**EYES:** Irrigate copiously with clean, fresh water for at least 15 minutes. Seek medical advice.

**SKIN:** Wash immediately with plenty of water. Remove contaminated clothing. If irritation persists, seek medical attention. Wash contaminated clothing before using them again.

**INHALATION:** Remove to open air. If breathing is irregular, seek medical advice.

**INGESTION:** Obtain immediate medical attention. Induce vomiting only if indicated by the doctor. Never give anything by mouth to an unconscious person.

## 5. Fire-fighting measures

### GENERAL INFORMATION

Use jets of water to cool the containers to prevent product decomposition and the development of substances potentially hazardous for health. Always wear full fire prevention gear. Collect extinguishing water to prevent it from draining into the sewer system. Dispose of contaminated water used for extinction and the remains of the fire according to applicable regulations.

### SUITABLE EXTINGUISHING MEDIA

The extinction equipment should be of the conventional kind: carbon dioxide, foam, powder and nebulised water.

### EXTINGUISHING MEDIA WHICH SHALL NOT BE USED FOR SAFETY REASONS

None in particular.

### HAZARDS CAUSED BY EXPOSURE IN THE EVENT OF FIRE

Do not breathe combustion products (carbon oxide, toxic pyrolysis products, etc).

### SPECIAL PROTECTIVE EQUIPMENT FOR FIRE-FIGHTERS

Hardhat with visor, fireproof clothing (fireproof jacket and trousers with straps around arms, legs and waist), work gloves (fireproof, cut proof and dielectric), a depressurised mask with facemask covering the whole of the operator's face or a self-respirator (self-protector) in the event of large quantities of fume.

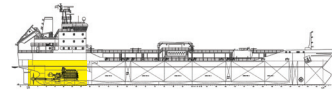
## 6. Accidental release measures

### PERSONAL PRECAUTIONS

Eliminate all sources of ignition (cigarettes, flames, sparks, etc.) from the leakage site. If there are no contraindications, spray solid products with water to prevent the formation of dust. Use breathing equipment if fumes or powders are released into the air. Block the leakage if there is no hazard. Do not handle damaged containers or the leaked product before donning appropriate protective gear. For information on risks for the environmental and health, respiratory tract protection, ventilation and personal protection equipment, see the other sections of this sheet.

### ENVIRONMENTAL PRECAUTIONS

# LECTRO CLEAN SLOW



Rev.  
007

The product must not penetrate the sewers, surface water, ground water and neighbouring areas.

#### METHODS FOR CLEANING UP

Use inert absorbent material (sand, vermiculite, diatomaceous earth, Kieselguhr, etc.) to soak up leaked product. Collect the majority of the remaining material and deposit it in containers for disposal. If there are no contraindications, use jets of water to eliminate product residues. Make sure the leakage site is well aired. Contaminated material should be disposed of in compliance with the provisions set forth in point 13.

## 7. Handling and storage

Store in a well ventilated place, keeping the containers closed when not used. Do not smoke while handling. Keep far away from sources of heat, bright flames and sparks and other sources of ignition.

## 8. Exposure control / personal protection.

### 8.1 Exposure limit values

Name	Type	Country	TWA/8h		STEL/15min		
			mg/m3	ppm	mg/m3	ppm	
TETRACHLOROETHYLENE	TLV-ACGIH		170		685		Skin
	OEL	IRL		25			Skin
	WEL	UK		50		100	Skin

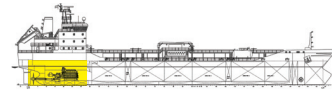
### 8.2 Exposure controls

As the use of adequate technical equipment must always take priority over personal protection equipment, make sure that the workplace is well aired through effective local aspiration or bad air vent. If such operations do not make it possible to keep the concentration of the product below the permitted workplace exposure thresholds a suitable respiratory tract protection must be used. See product label for hazard details during use. Ask your chemical substance suppliers for advice when choosing personal protection equipment. Personal protection equipment must comply with the rules in force indicated below.

#### HAND PROTECTION

Protect hands with category III (ref. Directive 89/686/EEC and standard EN 374) work gloves, such as those in PVA, butyl, fluoroelastomer or equivalent. The following should be considered when choosing work glove material: degradation, breakage times and permeation. Work glove resistance to preparations should be

# LECTRO CLEAN SLOW



Rev.  
007

checked before use, as it can be unpredictable. Gloves' limit depends on the duration of exposure.

#### EYE PROTECTION

Wear protective airtight goggles (ref. standard EN 166).

#### SKIN PROTECTION

Wear category III professional long-sleeved overalls and safety footwear (ref. Directive 89/686/CEE and standard EN 344). Wash body with soap and water after removing overalls.

#### RESPIRATORY PROTECTION

If the threshold value for one or more of the substances present in the preparation for daily exposure in the workplace or to a fraction established by the company's prevention and protection service is exceeded, wear a mask with an B or universal filter, the class (1, 2 or 3) of which must be chosen according to the limit concentration of use (ref. standard EN 141).

The use of breathing protection equipment, such as masks with organic vapour and dust/mist cartridges, is necessary in the absence of technical measures limiting worker exposure. The protection provided by masks is in any case limited.

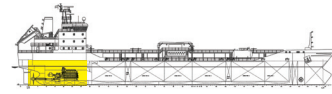
If the substance in question is odourless or its olfactory threshold is higher than the relative exposure limit and in the event of an emergency, or when exposure levels are unknown or the concentration of oxygen in the workplace is less than 17% volume, wear self-contained, open-circuit compressed air breathing apparatus (ref. standard EN 137) or fresh air hose breathing apparatus for use with full face mask, half mask or mouthpiece (ref. standard EN 138).

An emergency eye washing and shower system must be provided.

The product must be used in a closed cycle, in well-aired environments fitted with strong localised aspiration systems (capture speed > 1.5 m/s), otherwise it is compulsory to use the personal protection equipment indicated and always in well-aired environments fitted with strong localised aspiration systems (capture speed > 1.5 m/s).

In the presence of risks of exposure to splashes or squirts during work, adequate mouth, nose and eye protection should be used to prevent accidental absorption.

# LECTRO CLEAN SLOW



Rev.  
007

## 9. Physical and chemical properties

Colour	Not available
Odour	perchloroethylene
Appearance	liquid
Solubility	0,55 g/l
Specific gravity	0,865 Kg/l
Vapour density	Not available
Evaporation speed	Not available
Comburent properties	Not available
Partition coefficient: n-octanol/water	Not available
pH	Not available
Boiling point	Not available
Melting point	-30°C
Flash point	Not available
Lower explosive limit	1% (v/v)
Upper explosive limit	7% (v/v)
Ignition temperature	230°C
Vapour pressure	0,15kPa
Specific gravity	0,865Kg/l

## 10. Stability and reactivity

The product is stable in normal conditions of use and storage. When heated or in the event of a fire, carbon oxides may be released and vapours which are dangerous to health. The vapours may also form explosive mixtures with the air.

Tetrachloroethylene is noncombustible, but above 150 °C it decomposes giving toxic vapours of phosgene and corrosive vapours of hydrochloric acid. It decomposes when exposed to UV rays and hence also in strong sunlight. It reacts violently with finely subdivided light metals, such as aluminium and zinc.

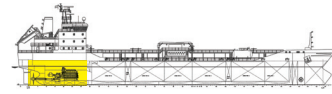
## 11. Toxicological information

This product must be handled carefully because of its possible carcinogenic effects. Anyway, currently available data do not allow us to comprehensively assess this product.

The introduction of even small quantities of this liquid into the respiratory system in case of ingestion or vomit may cause bronchopneumonia and pulmonary edema.



# LECTRO CLEAN SLOW



Rev.  
007

Tetrachloroethylene has a toxic effect on the central and peripheral nervous system, liver, kidneys and heart. Mucous membranes and skin are affected by its irritant effect.

## 12. Ecological information

This product is dangerous for the environment and the aquatic organisms. In the long term, it may even have negative effects on aquatic environment.

Acute and chronic environmental effects: the substance features an average toxicity level for water organisms.

Microtest (EC50 30min)= 117mg/l

EC50 147 mg/l/24h= (Daphnia Magna)

NOEC 29 mg/l/4 days= (Cyprinodon variegatus)

BCF 3.43 ng/l/1 to 21 days= (Lepomis macrochirus).

EC50 (48h):

18 mg/l/48h Daphnia magna

## 13. Disposal consideration

Reuse, when possible. Product residues should be considered special hazardous waste. The hazard level of waste containing this product should be evaluated according to applicable regulations.

Disposal must be performed through an authorised waste management firm, in compliance with national and local regulations.

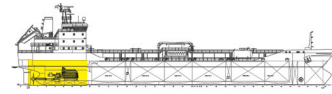
CONTAMINATED PACKAGING

Contaminated packaging must be recovered or disposed of in compliance with national waste management regulations.

## 14. Transport information

These goods must be transported by vehicles authorised to the carriage of dangerous goods according to the provisions set out in the current edition of the Code of International Carriage of Dangerous Goods by Road (ADR) and in all the applicable national regulations. These goods must be packed in their original packaging or in packaging made of materials resistant to their content and not reacting dangerously with it. People loading and unloading dangerous goods must be trained on all the risks deriving from these substances and on all actions that must be taken in case of emergency situations.

# LECTRO CLEAN SLOW



Rev.  
007

## Road and rail transport:

ADR/RID Class: 9  
UN: 3082  
Packing Group: III  
Label: 9  
Nr. Kemler: 90  
Limited Quantity: LQ07  
Tunnel restriction code: (E)  
Proper Shipping Name: Environmentally hazardous substance, liquid, n.o.s. (TETRACHLOROETHYLENE)



## Carriage by sea (shipping):

IMO Class: 9  
UN: 3082  
Packing Group: III  
Label: 9  
EMS: F-A, S-F  
Marine Pollutant: NO  
Proper Shipping Name: ENVIRONMENTALLY HAZARDOUS SUBSTANCE, LIQUID, N.O.S. (TETRACHLOROETHYLENE)

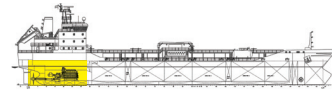


## Transport by air:

IATA: 9  
UN: 3082  
Packing Group: III  
Label: 9  
Cargo:  
Packaging instructions: 914  
Maximum quantity: 450 L  
Pass.:  
Packaging instructions: 914  
Maximum quantity: 450 L  
Special Instructions: A97, A158  
Proper Shipping Name: ENVIRONMENTALLY HAZARDOUS SUBSTANCE, LIQUID, N.O.S. (TETRACHLOROETHYLENE)

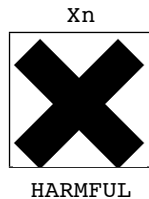


# LECTRO CLEAN SLOW



Rev.  
007

## 15. Regulatory information



- R40 LIMITED EVIDENCE OF A CARCINOGENIC EFFECT.
- R52/53 HARMFUL TO AQUATIC ORGANISMS, MAY CAUSE LONG-TERM ADVERSE EFFECTS IN THE AQUATIC ENVIRONMENT.
- R65 HARMFUL: MAY CAUSE LUNG DAMAGE IF SWALLOWED.
- S36/37 WEAR SUITABLE PROTECTIVE CLOTHING AND GLOVES.
- S62 IF SWALLOWED, DO NOT INDUCE VOMITING: SEEK MEDICAL ADVICE IMMEDIATELY AND SHOW THIS CONTAINER OR LABEL.

### Contains:

TETRACHLOROETHYLENE  
NAPHTA (PETROL.) HYDRODESULFURIZED HEAVY

Danger labelling under directives 67/548/EEC and 1999/45/EC and following amendments and adjustments.

Workers exposed to this chemical agent must not undergo health checks, provided that available risk-assessment data prove that the risks related to the workers' health and safety are modest and that the 98/24/EC directive is respected.

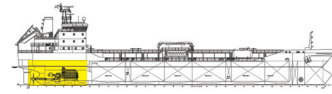
---

## 16. Other information

Text of (R) phrases quoted in section 3 of the sheet.

- R40 LIMITED EVIDENCE OF A CARCINOGENIC EFFECT.
- R51/53 TOXIC TO AQUATIC ORGANISMS, MAY CAUSE LONG-TERM ADVERSE EFFECTS IN THE AQUATIC ENVIRONMENT.
- R65 HARMFUL: MAY CAUSE LUNG DAMAGE IF SWALLOWED.

# LECTRO CLEAN SLOW



Rev.  
007

## GENERAL BIBLIOGRAPHY

1. Directive 1999/45/EC and following amendments;
2. Directive 67/548/EEC and following amendments and adjustments (technical adjustment XXIX);
3. Regulation (EC) 1272/2008 (CLP) of the European Parliament;
4. Regulation (EC) 1907/2006 (REACH) of the European Parliament;
5. The Merck Index. - 10th Edition;
6. Handling Chemical Safety;
7. Niosh - Registry of Toxic Effects of Chemical Substances;
8. INRS - Fiche Toxicologique (toxicological sheet);
9. Patty - Industrial Hygiene and Toxicology;
10. N.I. Sax - Dangerous properties of Industrial Materials-7, 1989 Edition;

## Note for users:

The information contained in the present sheet are based on our own knowledge on the date of the last version. Users must verify the suitability and thoroughness of provided information according to each specific use of the product .

This document must not be regarded as a guarantee on any specific product property.

The use of this product is not subject to our direct control; therefore, users must, under their own responsibility, comply with the current health and safety laws and regulations. The producer is relieved from any liability arising from improper uses.

Changes to previous review

The following sections were modified:

08 / 13 / 14